

Rhubarb Cottage, The Custards, Lyndhurst, The New Forest, SO45 7AP

www.escapetothetheforest.co.uk

Access Statement

Rhubarb Cottage is situated in The Custards, a quiet cul de sac road which has no through traffic. The cottage is about 100 metres from the open forest on a level road. It is a 5 minute walk to Lyndhurst centre.



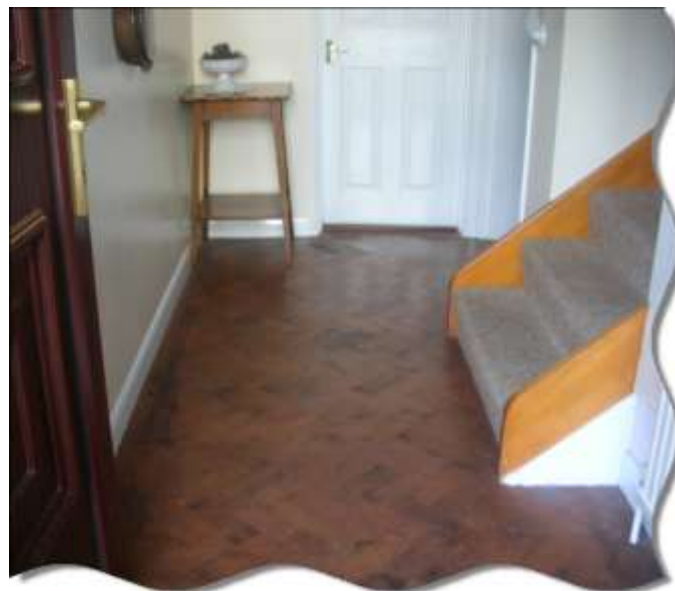
On arrival, a car can be parked in front of the cottage, parking parallel to the road with two wheels on the dedicated parking strip - this has a strengthened plastic lattice base which is covered in gravel.



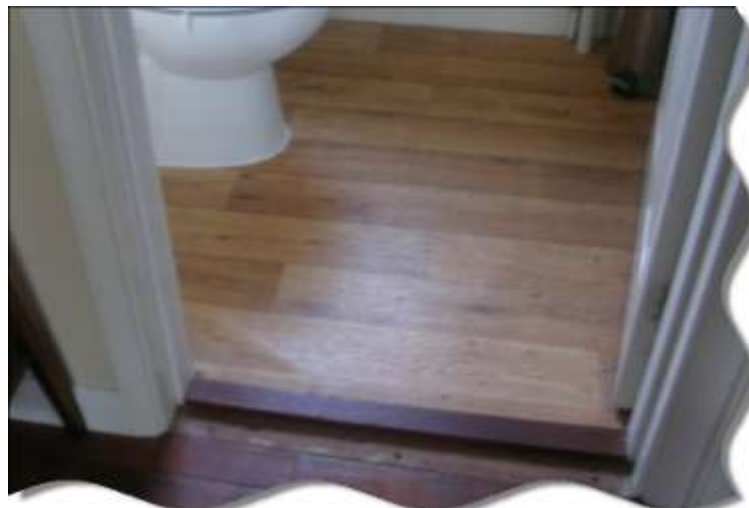
The front door is 73 cms wide, 198 cms high and has a small step of 7cms.



The Entrance Hallway is 131 cms wide, with a minimum width of 100cms at the bottom of the stairs.



The cottage features a downstairs toilet off of the Hallway. The doorway is 64 cms wide and there is a wooden strip across the doorway, approx 1cm high.



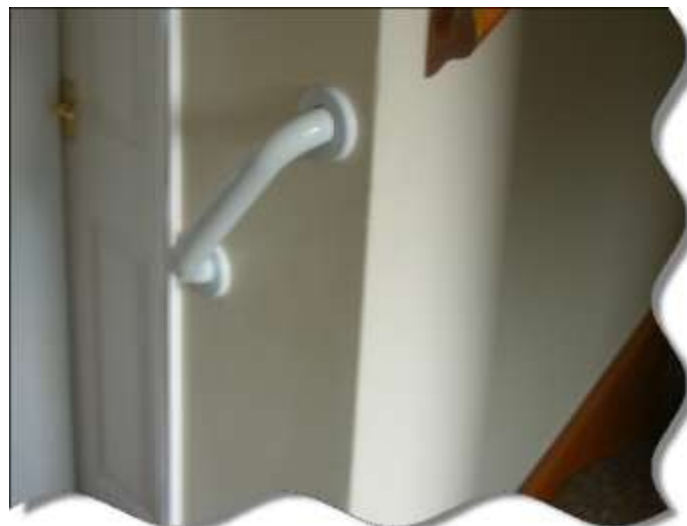
All other doors in Rhubarb Cottage have a standard width of 70 cms.

The Hallway opens into the dining room which features an archway through to the lounge. There are no steps in this area

The kitchen units are all of a standard height, with floor standing fridge and washing machine and eye level oven.



A 'Grab Handle' is fitted at the base of the stairs. The stairs themselves are 81 cms wide. They are not as steep as a standard set of stairs, making the cottage ideal for those who may find it difficult to climb steep stairs. There is a continuous wooden banister on one side of the stairs, from top to bottom.



On the first floor there are two bedrooms with double beds. There is access to both sides of the beds. All bed linen is non feather.

The bathroom features a bath with shower over. The bath is 57 cms high. There is a convenient Grab Handle at the end of the bath, to assist with climbing in and out.



There is one further bedroom on the second floor. This has two single beds and two velux window lights. Access to this bedroom is via another flight of stairs which is 66cms wide.

Access to the paved courtyard garden is via a wrought iron gate to the side of the cottage – 65cms wide. The back door leading out from the kitchen also opens onto the garden. There is a small step at the bottom of the door. Outside of the back door is a paved area of nine paving slabs with a small step down to the rest of the garden. Patio doors from the dining room also open out onto the garden via this step.



The garden itself is fully enclosed with wooden fencing panels.



Contact Information:

Rhubarb Cottage

The Custards

Lyndhurst

SO45 7AP

Owners: Karen and Rob Horlock

Tel: 02380 812753

Email: info@escapetotheforest.co.uk

www.escapetotheforest.co.uk